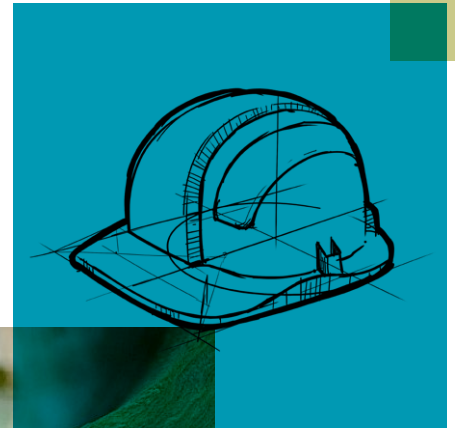


ROCKLAP H&V PIPE SECTION PACKING GUIDE

Pre-formed insulation with a foil facing and self-adhesive lap





ROCKLAP H&V PIPE SECTION PACKING GUIDE

RockLap H&V Pipe Sections are strong lengths of pre-formed insulation with a one piece, factory applied foil facing with an integral self-adhesive lap. This integral lap ensures fast and easy installation: just snap the sections onto the pipe, peel off the backing tape and smoothdown for a completely sealed joint.

The Pipe Sections are designed for thermal and acoustic insulation of heating, ventilation and air conditioning pipework in a temperature range of 0°C to 250°C.



Advantages

- Resilient, high performance barrier provided by one-piece, reinforced foil with integral lap
- Fast and simple installation reduces costs and time on site Installation may be carried out in winter conditions
- Tape requirement reduced
- Limited combustible product with surface finish also complying to Class 0

Sizes & packaging

RockLap H&V Pipe Sections are supplied in 1 metre lengths and are available to suit a wide variety of pipe outer diameters (O.D.) from 17mm to 406mm. The sections are also available in an array of thicknesses to suit the level of insulation required (20mm to 100mm).

To determine whether a particular combination of O.D. and thickness is available, please refer to the table on page 5.

Alternative sizes may be available. For further details please contact ROCKWOOL Customer Support.

Thermal conductivity and thermal loss

The thermal conductivity of the H&V Pipe Section depends upon the size of the pipe section. Please refer to the table on the next page to determine the performance curve for the sizes of interest.

The Lambda values for the relevant curves are contained in the table below.

Temperature (°C)	*Curve 1 (W/mK)	*Curve 2 (W/mK)
10	0.033	0.034
50	0.037	0.039
100	0.044	0.046
150	0.052	0.056

*For further information please also refer to the DOP which can be accessed at www.rockwool.com/dop

Specification

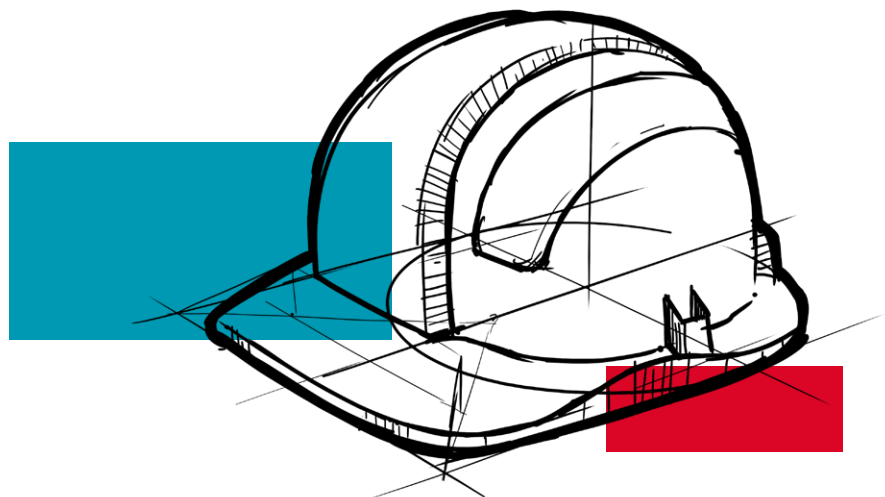
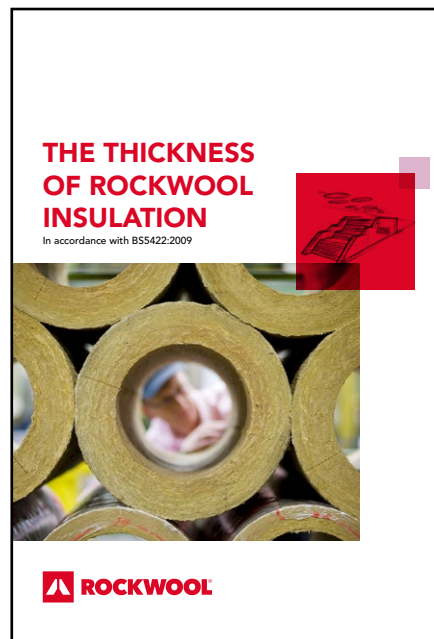
For information on specifying the correct thickness of material, please refer to our brochure entitled:

- The thickness of ROCKWOOL Insulation in accordance with BS5422:2009.

For detailed specification clauses, please refer to our:

- HVAC Specification Detail Guide.

You can download both of these documents from www.rockwool.co.uk



Rocklap H&V pipe sections availability, packing and performance matrix

To Suit Pipe O.D. / mm	Insulation Thickness / mm										
	20	25	30	35	40	45	50	60	70	80	100
17	42 (1)	30 (1)	25 (1)	20 (1)	16 (1)						
21	36 (1)	30 (1)	20 (1)	13 (1)	13 (1)	9 (1)	9 (1)				
27	30 (1)	25 (1)	20 (1)	12 (1)	12 (1)	9 (1)	9 (1)	6 (2)	4 (2)		
34	25 (1)	20 (1)	16 (1)	12 (1)	9 (1)	8 (1)	8 (1)	5 (2)	4 (2)		
42	20 (1)	16 (1)	12 (1)	9 (1)	9 (1)	6 (1)	6 (1)	4 (2)	4 (2)	■ (2)	■ (2)
48	16 (1)	16 (1)	12 (1)	9 (1)	9 (1)	6 (1)	6 (1)	4 (2)	■ (2)	■ (2)	■ (2)
54	16 (1)	12 (1)	10 (1)	8 (1)	8 (1)	5 (1)	5 (1)	4 (2)	■ (2)	■ (2)	
60	12 (1)	12 (1)	9 (1)	7 (1)	7 (1)	5 (1)	5 (1)	4 (2)	■ (2)	■ (2)	■ (2)
67		9 (2)	9 (2)	6 (2)	6 (2)	4 (2)	4 (2)	■ (2)	■ (2)	■ (2)	■ (2)
76		9 (2)	7 (2)	5 (2)	5 (2)	4 (2)	4 (2)	■ (2)	■ (2)	■ (2)	■ (2)
80		9 (2)	6 (2)	5 (2)	5 (2)	4 (2)	4 (2)	■ (2)	■ (2)	■ (2)	■ (2)
89		6 (2)	6 (2)	4 (2)	4 (2)	4 (2)	■ (2)	■ (2)	■ (2)	■ (2)	■ (2)
102		5 (2)	■ (2)	■ (2)	■ (2)	■ (2)	■ (2)	■ (2)	■ (2)	■ (2)	■ (2)
108		5 (2)	■ (2)	■ (2)	■ (2)	■ (2)	■ (2)	■ (2)	■ (2)	■ (2)	■ (2)
114		4 (2)	● (2)	■ (2)	■ (2)	■ (2)	■ (2)	■ (2)	■ (2)	■ (2)	■ (2)
127		4 (2)	● (2)	■ (2)	■ (2)	■ (2)	■ (2)	■ (2)	■ (2)	■ (2)	
133		● (2)	● (2)	■ (2)	■ (2)	■ (2)	■ (2)	■ (2)	■ (2)	■ (2)	■ (2)
140		● (2)	● (2)	■ (2)	■ (2)	■ (2)	■ (2)	■ (2)	■ (2)	■ (2)	■ (2)
150		● (2)	● (2)	■ (2)	■ (2)	■ (2)	■ (2)	■ (2)			
154		● (2)	● (2)	■ (2)	■ (2)	■ (2)	■ (2)	■ (2)	■ (2)	■ (2)	
159		● (2)	● (2)	■ (2)	■ (2)	■ (2)	■ (2)	■ (2)	■ (2)	■ (2)	■ (2)
169		● (2)	● (2)	■ (2)	■ (2)	■ (2)	■ (2)	■ (2)	■ (2)	■ (2)	■ (2)
178		● (2)	● (2)	■ (2)	■ (2)	■ (2)	■ (2)	■ (2)			
191		● (2)	● (2)	■ (2)	■ (2)	■ (2)	■ (2)	■ (2)			
194		● (2)	● (2)	■ (2)	■ (2)	■ (2)	■ (2)	■ (2)	■ (2)	■ (2)	■ (2)
205		● (2)	● (2)	■ (2)	■ (2)	■ (2)	■ (2)	■ (2)	■ (2)	■ (2)	■ (2)
219		● (2)	● (2)	■ (2)	■ (2)	■ (2)	■ (2)	■ (2)	■ (2)	■ (2)	■ (2)
230					■ (2)	■ (2)	■ (2)	■ (2)	■ (2)	■ (2)	■ (2)
245		● (2)	● (2)	■ (2)	■ (2)	■ (2)	■ (2)	■ (2)	■ (2)	■ (2)	■ (2)
253		● (2)	● (2)	■ (2)	■ (2)	■ (2)	■ (2)	■ (2)	■ (2)	■ (2)	■ (2)
273		● (2)	● (2)	■ (2)	■ (2)	■ (2)	■ (2)	■ (2)	■ (2)	■ (2)	■ (2)
279		● (2)	● (2)	■ (2)	■ (2)	■ (2)	■ (2)	■ (2)	■ (2)	■ (2)	■ (2)
305		● (2)	● (2)	■ (2)	■ (2)	■ (2)	■ (2)	■ (2)	■ (2)	■ (2)	■ (2)
318		● (2)	● (2)	■ (2)	■ (2)	■ (2)	■ (2)	■ (2)	■ (2)	■ (2)	■ (2)
324		● (2)	● (2)	■ (2)	■ (2)	■ (2)	■ (2)	■ (2)	■ (2)	■ (2)	■ (2)
356			● (2)	■ (2)	■ (2)	■ (2)	■ (2)	■ (2)	■ (2)	■ (2)	■ (2)
406			● (2)	■ (2)	■ (2)	■ (2)	■ (2)	■ (2)	■ (2)	■ (2)	■ (2)

(1 or 2) Applicable DOP Lambda Curve
 Size is available to order
 Size currently not available

42 Number indicates the Linear Metres per carton
 These sections come "split" and are packed as single lengths which are shrink wrapped in polyethylene
● These sections come "unsplit" and are packed as single lengths which are shrink wrapped in polyethylene

In accordance with REACH health and environment regulations, there are no hazardous classifications associated with ROCKWOOL stone wool in respect to physical, health and environmental considerations. ROCKWOOL Limited reserves the right to alter or amend the specification of products without notice as our policy is one of constant improvement. The information contained in this data sheet is believed to be correct at the date of publication. Whilst ROCKWOOL will endeavour to keep its publications up to date, readers will appreciate that between publications there may be pertinent changes in the law, or other developments affecting the accuracy of the information contained in this data sheet.

The ROCKWOOL Trademark

ROCKWOOL® - our trademark

The ROCKWOOL trademark was initially registered in Denmark as a logo mark back in 1936. In 1937, it was accompanied with a word mark registration; a registration which is now extended to more than 60 countries around the world.

The ROCKWOOL trademark is one of the largest assets in the ROCKWOOL Group, and thus well protected and defended by us throughout the world.

If you require permission to use the ROCKWOOL logo for your business, advertising or promotion. You must apply for a Trade Mark Usage Agreement. To apply, write to:
marketcom@rockwool.com.

Trademarks

The following are registered trademarks of the ROCKWOOL Group:

ROCKWOOL®

ROCKCLOSE®

RAINSCREEN DUO SLAB®

HARDROCK®

ROCKFLOOR®

FLEXI®

BEAMCLAD®

FIREPRO®

Disclaimer

ROCKWOOL Limited reserves the right to alter or amend the specification of products without notice as our policy is one of constant improvement. The information contained in this brochure is believed to be correct at the date of publication. Whilst ROCKWOOL will endeavour to keep its publications up to date, readers will appreciate that between publications there may be pertinent changes in the law, or other developments affecting the accuracy of the information contained in this brochure. The applications referred to within the brochure do not necessarily represent an exhaustive list of applications. ROCKWOOL Limited does not accept responsibility for the consequences of using ROCKWOOL in applications different from those described within this brochure. Expert advice should be sought where such different applications are contemplated, or where the extent of any listed application is in doubt.

© ROCKWOOL 2018. All rights reserved.

Photography and Illustrations

The product illustrations are the property of ROCKWOOL Ltd and have been created for indicative purposes only.

Unless indicated below, the photography and illustrations used in this guide are the property of ROCKWOOL Limited. We reserve all rights to the usage of these images.

If you require permission to use ROCKWOOL images, you must apply for a Usage Agreement. To apply, write to:
marketcom@rockwool.com.

Notes

September 2018

ROCKWOOL Limited

Pencoed
Bridgend
CF35 6NY

Tel: 01656 862 621
info@rockwool.co.uk
rockwool.co.uk

